

JSNA Refresh Plan

Version 1.1



Plan

- JSNA would be an interactive PowerBI dashboard that functions to sort reports, needs assessments, dashboards, and external resources into sections based on the Barnet Corporate Plan: People, Places, Planet.
 - Choosing one of these themes would take you to a second page with further sub-sections e.g., Start Well, Live Well, Age Well.
 - This would lead to a list of resources that fit the chosen theme.
- This would allow:
 - Users to see reports and tools on the specific topic that they are interested in, increasing accessibility of the JSNA.
 - For already existing resources to be incorporated and brought together in one place
 - For the JSNA to be continually updated and refreshed as new resources get produced and new data becomes available for existing JSNA chapters
 - Insights to be easily accessed and extracted for use in other documents
- Chapters would focus on current and emerging challenges as well as the diversity and change in Barnet over time and compared to other areas
- Analysis will include low-level geographies such as LSOA (when this data is available). This will improve the identification of current and emerging challenges in small areas that traditionally are hidden by a larger geographical area

Example of dashboard layout

Barnet Joint Strategic Needs Assessment



People



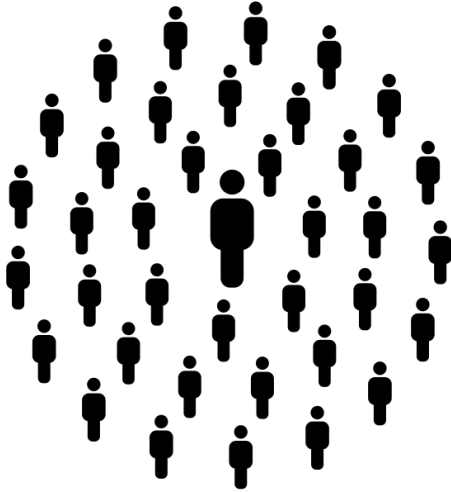
Places



Planet

This home page will include a narrative to explain why we are using the themes of People, Places and Planet and link to Our Plan for Barnet

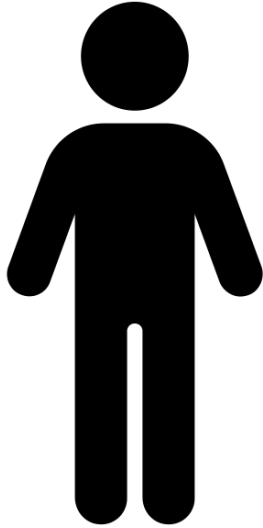
People



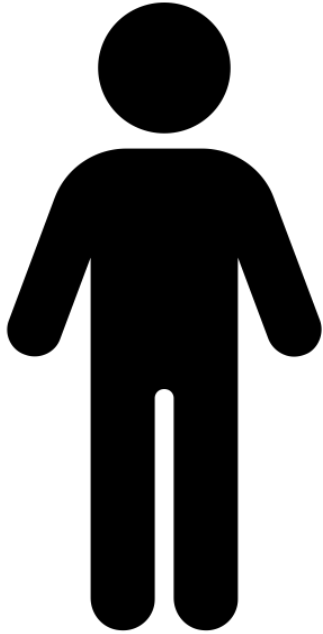
Population Overview



Start Well



Live Well



Age Well



Live well

Public
Health
dashboard

Mental Health and
Wellbeing
dashboard

Employment
Dashboard

Social
Loneliness
Report

Sexual Health
Needs
Assessment

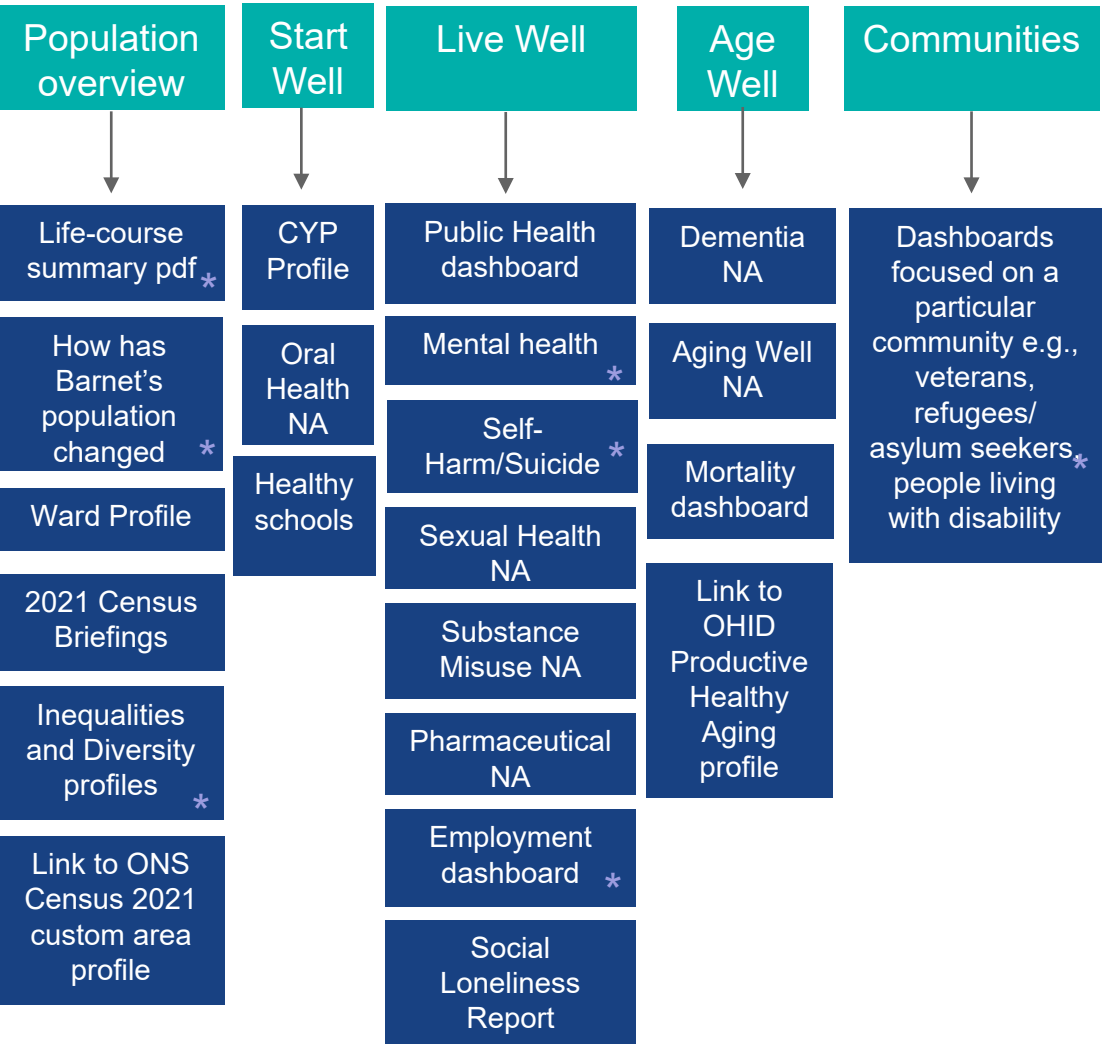
Substance Misuse
Needs
Assessment

Pharmaceutical
Needs
Assessment

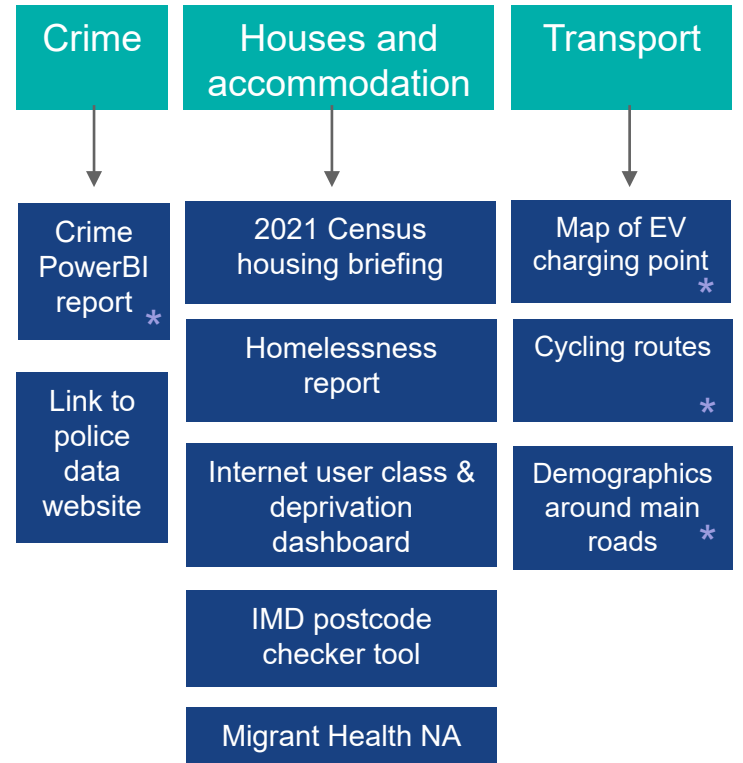


Overall layout plan and example chapter content

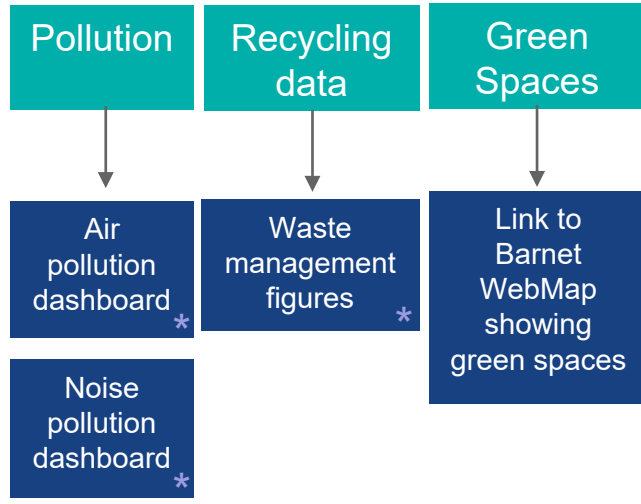
People



Places



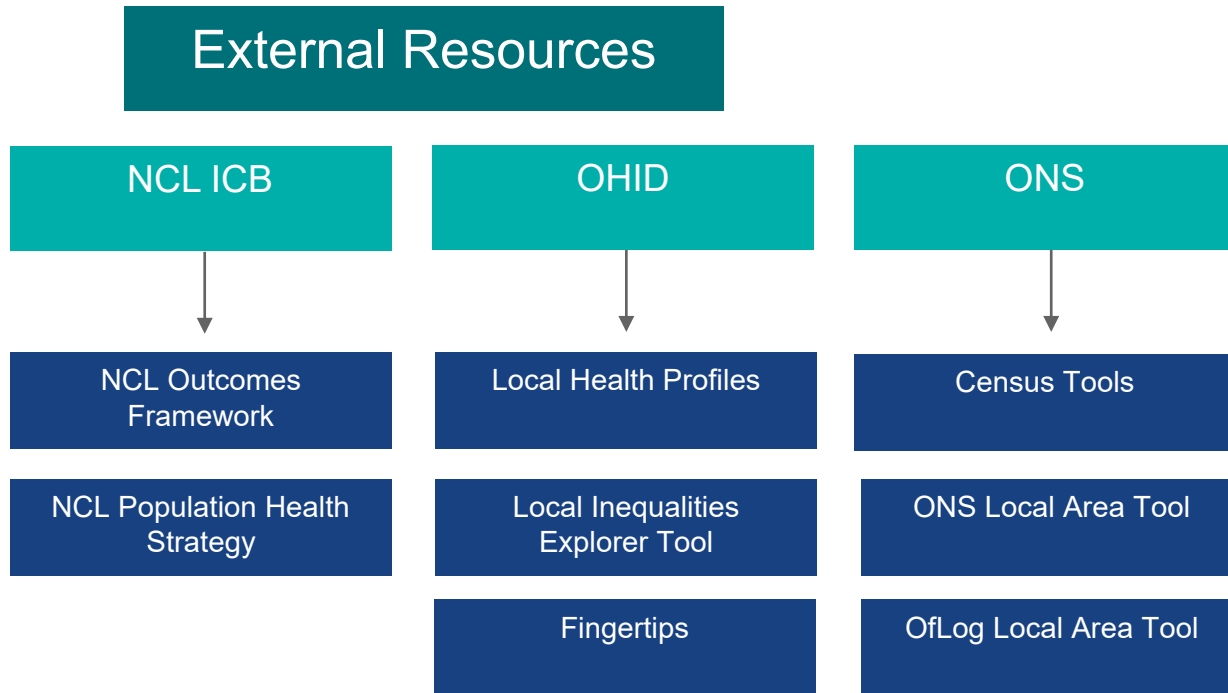
Planet



* = resource to be made

Note: These are examples of resources to include. As new resources become available, they will be incorporated into the JSNA product.

Overall layout plan and example chapter content



* = resource to be made

Note: These are examples of resources to include. As new resources become available, they will be incorporated into the JSNA product.

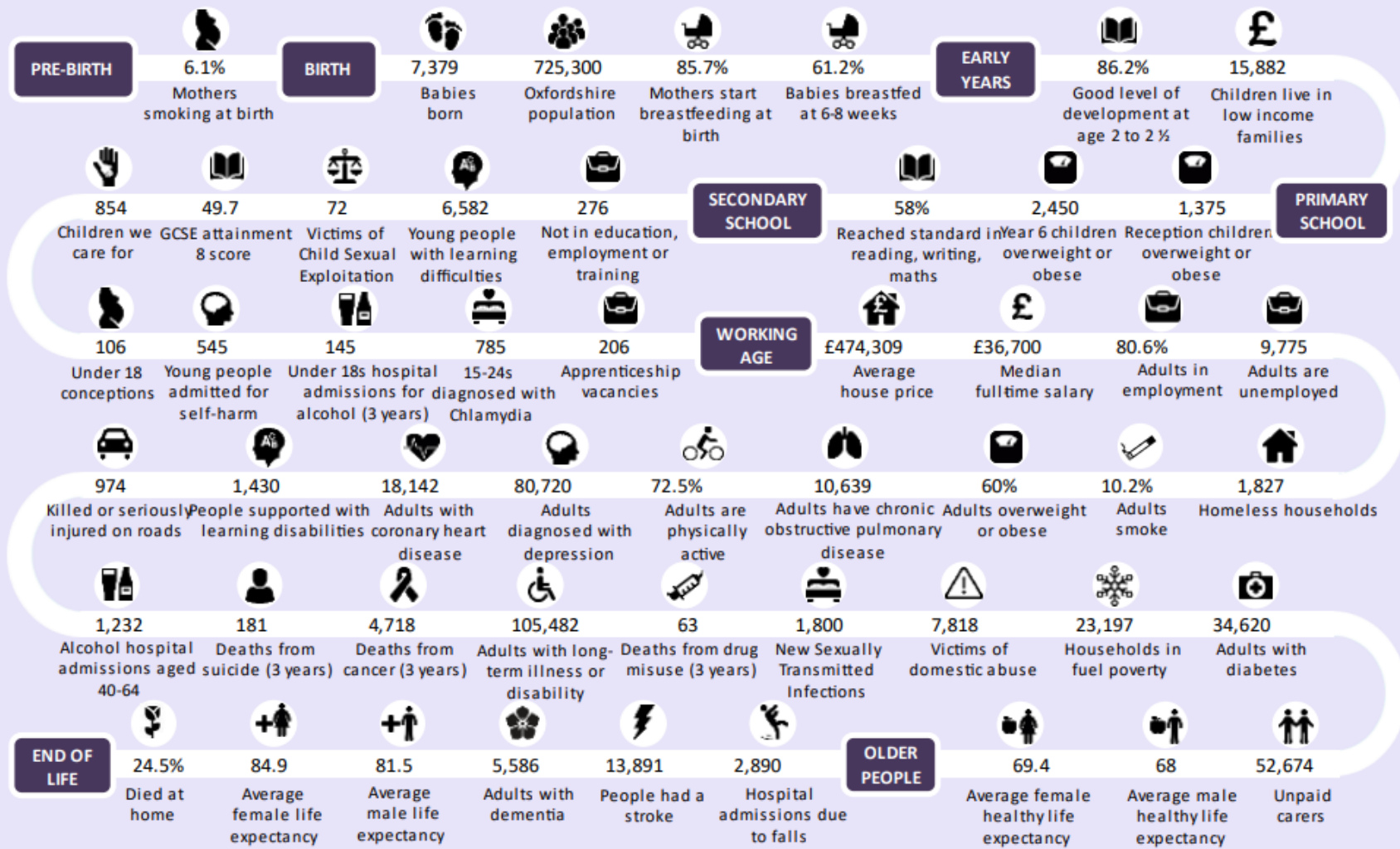
Timeline

- **September/October 2023:** Present JSNA plan to members of PH SMT and the Health and Wellbeing Board for review and approval.
- **October 2023 – December 2023:** Create the overall JSNA PowerBI report to add all existing dashboards, reports, tools and needs assessments into.
- **January – February 2024:** Start to create PowerBI dashboards for topics that do not have an existing tool:
 - Planned topics: Mental Health and Wellbeing; Employment; Pollution; Crime.
 - Time: approx. one month each
- **February 2024:** Release a draft of new JSNA product for feedback
- **February – April 2024:** Continue developing dashboards for topics that do not have an existing tool
- **April – May 2024:** Create JSNA summary documents and infographics (e.g., life course summary)
- **May 2024:** Deadline to release a live version of JSNA for public consumption (note that JSNA will continue to develop after this date).
- **May – June 2024:** Training and demonstration session for the updated JSNA product will be held

Examples from other LAs

- Buckinghamshire: [Microsoft Power BI](#)
 - Example of how this JSNA interactive layout could function
- Brent: [Microsoft Power BI](#)
 - Another example of an interactive JSNA report sorted into sections
- Oxfordshire: [PowerPoint Presentation \(oxfordshire.gov.uk\)](#)
 - Example of a life-course summary to possibly function as a “JSNA in a page” document

Oxfordshire JSNA, health and wellbeing facts and figures 2023




An example from Oxfordshire of a life-cycle infographic.

A similar infographic can be produced for Barnet JSNA alongside smaller infographics that focus on specific chapters or communities such as refugees and asylum seekers, people living with disability and veterans.

Needs Assessment Styling

To ensure a consistency with the styling of needs assessments we propose to introduce the following as guidance to staff with a dedicated 'how to' page on the staff intranet.

A needs assessment requires the following:

- A main document which always uses the Barnet letterhead template: [BARNET-Corporate-Letterhead-Template_MASTER.docx \(sharepoint.com\)](#)
- A short executive summary which uses the Barnet powerpoint template:  Needs-Assessmen
Summary-Templa
- All charts, tables and figures should follow the Barnet brand guidelines: [Customer and Place - Barnet-Corporate-Brand-Guidelines-2023-\[v4\].pdf - All Documents \(sharepoint.com\)](#)
- Each needs assessment should be accompanied by an interactive data dashboard that sits within the wider JSNA product and links to the summary and main document.
- All needs assessments should be uploaded to the Health and Wellbeing website: [Health and Wellbeing key documents | Barnet Council](#)